

Instructions for full paper submission

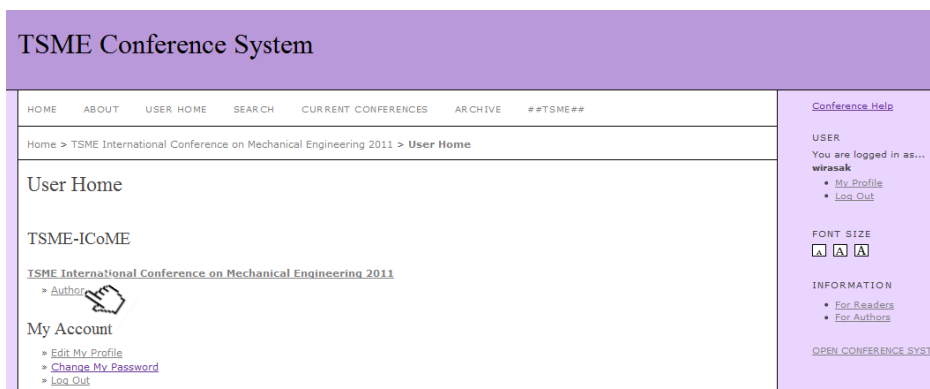
<http://www.me.psu.ac.th/tsme/ocs/index.php/TSME-ICoME/2011>

1. Please key in your username and password.



The screenshot shows the homepage of the TSME International Conference on Mechanical Engineering 2011. At the top left is the conference logo, which features a globe and the text "TSME - ICoME". To the right of the logo, the text "TSME International Conference on Mechanical Engineering" is displayed. Below the logo and title is a navigation menu with links for HOME, ABOUT, LOG IN, ACCOUNT, SEARCH, CURRENT CONFERENCES, ARCHIVE, and ##TSME##. The main content area includes the title "TSME International Conference on Mechanical Engineering 2011", the dates "October 19, 2011 – October 21, 2011", and a link for "New Web page TSME-ICoME 2011 (Click)". A "NEWS" section follows, with a heading "PRELIMINARY HOTEL RESERVATION FORM: TSME-ICoME 2011." and a message to "Dear All colleagues". The message explains that due to hotel room limitations, participants are encouraged to fill out a "PRELIMINARY HOTEL RESERVATION FORM" (with a "CLICK HERE" link) by September 15, 2011. It also notes that special prices are available until September 15, 2011, and that changes to the reservation form must be made before September 20, 2011.

2. Click on “[Author](#)”.



The screenshot shows the "User Home" page of the TSME Conference System. The page title is "TSME Conference System". The navigation menu includes HOME, ABOUT, USER HOME, SEARCH, CURRENT CONFERENCES, ARCHIVE, and ##TSME##. The main content area is titled "User Home" and contains the following elements: "TSME-ICoME", "TSME International Conference on Mechanical Engineering 2011" with a "» Author" link and a hand icon, and "My Account" with links for "» Edit My Profile", "» Change My Password", and "» Log Out". On the right side, there is a sidebar with "Conference Help", "USER" information (logged in as "wirasak" with links for "My Profile" and "Log Out"), "FONT SIZE" controls (A A A), "INFORMATION" links for "For Readers" and "For Authors", and a link for "OPEN CONFERENCE SYSTEM".

3. Click on “[STEP ONE OF THE SUBMISSION PROCESS](#)”

TSME Conference System

HOME ABOUT USER HOME SEARCH CURRENT CONFERENCES ARCHIVE ##TSME##

Home > User > Author > Active Submissions

Active Submissions

ACTIVE ARCHIVE

ID	MM-DD SUBMIT	TRACK	AUTHORS	TITLE	STATUS
296	—	TSF	wirasak	UNTITLED	Incomplete DELETE
588	—	TSF	wirasak	UNTITLED	Incomplete DELETE
589	—	TSF	wirasak	UNTITLED	Incomplete DELETE
590	—	TSF	wirasak	UNTITLED	Incomplete DELETE
591	05-23	TSF	wirasak	TEST	PAPER IN REVIEW
626	—	TSF	wirasak	INSTRUCTIONS FOR ABSTRACT SUBMISSION	AWAITING UPLOAD

1 - 6 of 6 Items

Start here to submit a paper to this conference.
[STEP ONE OF THE SUBMISSION PROCESS](#)

Conference Help

USER
 You are logged in as...
wirasak
 • [My Profile](#)
 • [Log Out](#)

FONT SIZE

INFORMATION
 • [For Readers](#)
 • [For Authors](#)

[OPEN CONFERENCE SYSTEMS](#)

Step 1. Starting the Submission

Step 1. Starting the Submission

1. START 2. ENTER METADATA 3. UPLOAD SUPPLEMENTARY FILES 4. CONVERSION

Encountering difficulties? Contact Samsak.Vogor@tsme.tn for assistance (066/02-5943001 ext 3294).

Conference Track
 Select the appropriate track for this submission (see [Track Policies](#)).

Track*

Submission Checklist
 This submission is ready to be considered by this conference by checking off the following (comments to the director can be added below).

- This submission has not been previously published, nor is it before another conference for consideration (or an explanation has been provided in Comments to the Director).
- The submission file is in Microsoft Word, RTF, or WordPerfect document file format.
- The text is single-spaced; uses a 12-point font; employs italics, rather than underlining (except with URL addresses); and all illustrations, figures, and tables are placed within the text at the appropriate points, rather than at the end.
- The text adheres to the stylistic and bibliographic requirements outlined in the [Author Guidelines](#), which is found in About the Conference.
- If submitting to a peer-reviewed track of the conference, authors' names are removed from submission, with "Author" and year used in the bibliography and footnotes, instead of authors' name, paper title, etc.
- If submitting to peer review, all Microsoft Office documents (including Supplementary Files) have been saved by going to File and selecting Save As; clicking Tools (or Options in a Mac); clicking Security; selecting "Remove personal information from file properties on save"; clicking Save.

Copyright Notice
 Authors who submit to this conference agree to the following terms:
 a) Authors retain copyright over their work, while allowing the conference to place this unpublished work under a [Creative Commons Attribution License](#), which allows others to freely access, use, and share the work, with an acknowledgement of the work's authorship and its initial presentation at this conference.
 b) Authors are able to waive the terms of the CC license and enter into separate, additional contractual arrangements for the non-exclusive distribution and subsequent publication of this work (e.g., publish a revised version in a journal, post it to an institutional repository or publish it in a book), with an acknowledgement of its initial presentation at this conference.
 c) In addition, authors are encouraged to post and share their work online (e.g., in institutional repositories or on their websites) at any point before and after the conference.

Comments for Conference Director
 Enter text (optional)

Save and continue

* denotes required field

Select Track, Submission Checklist and
 than click on “ Save and continue ”

Step 2. Entering the Submission's Metadata

Step 2. Entering the Submission's Metadata

1. START 2. ENTER METADATA 3. UPLOAD SUBMISSION 4. UPLOAD SUPPLEMENTARY FILES 5. CONFIRMATION

Authors

First name*
Middle name
Last name*
Affiliation
Country
Email*
Url
Bio Statement (e.g., department and rank)

Title

Title*

Indexing

Provide terms for indexing the submission; separate terms with a semicolon (term1; term2; term3).

Academic discipline and sub-discipline
Subject classification
Keywords
Geospatial coverage
Chronological or historical coverage
Research sample characteristics
Type, method or approach
Language
English, French, Spanish, Additional info

Supporting Agencies

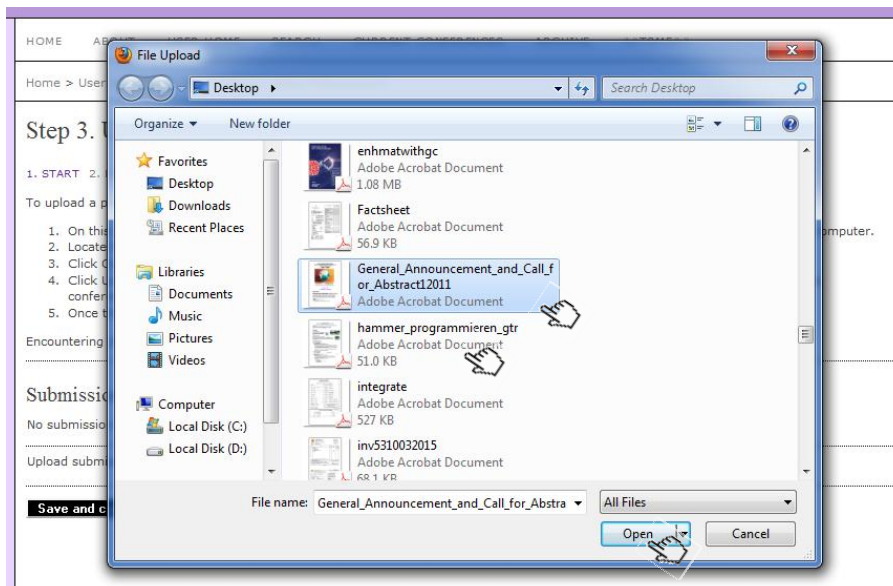
Identify agencies that provided funding or support for the work presented in the submission.

Agency

* Denotes required field

Please enter your manuscript title and then press "save and continue"

Step 3. Uploading the Submission



HOME ABOUT USER HOME SEARCH CURRENT CONFERENCES ARCHIVE ##TSME##

Home > User > Author > Submissions > New Submission

Step 3. Uploading the Submission

1. START 2. ENTER METADATA 3. **UPLOAD SUBMISSION** 4. UPLOAD SUPPLEMENTARY FILES 5. CONFIRMATION


To upload a paper to this conference, complete the following steps.


1. On this page, click Browse (or Choose File) which opens a Choose File window for locating the file on the hard drive of your computer.
2. Locate the file you wish to submit and highlight it.
3. Click Open on the Choose File window, which places the name of the file on this page.
4. Click Upload on this page, which uploads the file from the computer to the conference's web site and renames it following the conference's conventions.
5. Once the submission is uploaded, click Save and Continue at the bottom of this page.

Encountering difficulties? Contact [Somsak Vongpradubchai](#) for assistance ((066)02-5643001 ext 3264).

Submission File

No submission file uploaded.

Upload submission file  1

 2

Step 4 Upload Supplementary Files(If any) and then click on “ Save and continue

อัปโหลดไฟล์เสริม(ถ้ามี)

Step 4a. Add a Supplementary File

[<< Back to Supplementary Files](#)

Supplementary File Metadata

To index this supplementary material, provide the following metadata for the uploaded supplementary file.

Title*

Creator (or owner) of file

Keywords

Type Specify other

Brief description

Publisher

Contributor or sponsoring agency

Date YYYY-MM-DD Date when data was collected or instrument created.

Source

Language English:en, French:fr, Spanish:es. [Additional codes](#).

Supplementary File

File name [638-866-1-SP.pdf](#)


Original file name 25 h.pdf

File size 112KB

Date uploaded 2011-06-30 03:28 PM

Present file to reviewers (without metadata), as it will not compromise blind review.

Replace file Use Save to upload file.



Step 4. Confirming the Submission


Step 4. Confirming the Submission

1. START 2. ENTER METADATA 3. UPLOAD SUBMISSION 4. UPLOAD SUPPLEMENTARY FILES 5. **CONFIRMATION**

To submit your manuscript to TSME-ICoME click Finish Submission. The submission's principal contact will receive an acknowledgement by email and will be able to view the submission's progress through the editorial process by logging in to the conference web site. Thank you for your interest in publishing with TSME-ICoME.

File Summary

ID	ORIGINAL FILE NAME	TYPE	FILE SIZE	DATE UPLOADED
865	25 H.PDF	Submission File	112KB	06-30
866	25 H.PDF	Supplementary File	112KB	06-30



Active Submissions

[ACTIVE](#) [ARCHIVE](#)

ID	MM-DD SUBMIT	TRACK	AUTHORS	TITLE	STATUS
296	—	TSF	wirasak	UNTITLED	Incomplete DELETE
588	—	TSF	wirasak	UNTITLED	Incomplete DELETE
589	—	TSF	wirasak	UNTITLED	Incomplete DELETE
590	—	TSF	wirasak	UNTITLED	Incomplete DELETE
591	05-23	TSF	wirasak	TEST	PAPER IN REVIEW
626	—	TSF	wirasak	INSTRUCTIONS FOR ABSTRACT SUBMISSION	AWAITING UPLOAD
637	—	TSF	wirasak	TSME2011	AWAITING UPLOAD
638	06-30	TSF	wirasak	TSME2011 ///	PAPER IN REVIEW

1 - 8 of 8 Items

Start here to submit a paper to this conference.
[STEP ONE OF THE SUBMISSION PROCESS](#)

